



THE COORDINATING COUNCIL

*Information and Referral Trees to access the following services in Calhoun County:*

Adult Literacy  
Children's Literacy  
Dental Care  
Disability Resources  
Disaster Response  
Domestic Violence & Sexual Assault  
Early Childhood  
Emergency Assistance  
Financial Services  
Foster Care Resources  
Health Care for the Uninsured  
Housing Assistance

Medical Transportation  
Mental Health  
Prenatal / Obstetrics  
Public Benefits  
Senior Health Services  
Senior Housing  
Senior Services  
Substance Abuse  
Teen Pregnancy Resources  
Veterans Benefits  
Women's Health  
Youth Services

140 Michigan Avenue West, Battle Creek, MI 49017  
Phone: (269) 441-5956 Fax: (269) 966-2844  
[info@tcccalhoun.org](mailto:info@tcccalhoun.org)  
[www.tcccalhoun.org](http://www.tcccalhoun.org)

2016-2017

# ADULT LITERACY

Community Literacy Collaborative  
(269) 962-9538

## Adult Education and Literacy

Battle Creek Family YMCA  
Literacy Program  
(269) 788-0495

Battle Creek Public Schools  
Adult Education  
Miller-Stone Building  
(269) 965-9514

Community Literacy  
Collaborative  
(269) 962-9538

Kellogg Community College  
Pre-college Reading Courses  
Academic Advising  
(269) 965-4124

Sylvan Learning Center  
Free Consultation  
Fee for Service  
(269) 979-0025

## English as a Second Language Programs

Battle Creek Family YMCA  
Literacy Program  
(269) 788-0495

Battle Creek Public Schools  
Adult Education  
(269) 965-9534

Burma Center  
(269) 441-1131

Covenant Hope Church ESL Class  
(269) 962-1817  
*Japanese only*

ESL through POBLO  
(St. Paul Lutheran Church)  
(269) 968-3055

St. Mark Lutheran Church  
ESL Classes  
*Japanese only*  
(269) 964-0401

VOCES»  
(269) 841-4111

## G.E.D. Preparation

Albion District Library  
(517) 629-3993

Battle Creek Family YMCA  
Literacy Program  
(269) 788-0495

Battle Creek Public Schools  
Adult Education  
(269) 965-9514

Women's Co-op  
*Members Only*  
(269) 966-8988

## G.E.D. Testing Sites

Albion District Library  
(517) 629-3993

Battle Creek Family YMCA  
Literacy Program  
(269) 788-0495

Fee is \$37.50 per test

Four tests are required  
to receive GED Certification

Register online: [www.ged.com](http://www.ged.com)

## Workforce Development

Battle Creek Family YMCA  
Literacy Program  
(269) 788-0495

Goodwill Industries  
(269) 964-9455

Michigan Rehabilitation Services  
(269) 968-3311  
(877) 901-9189

Southwest Michigan Works!  
*WIOA Adult and Dislocated  
Worker, WIOA Youth Program  
Path Program,  
Employment Services,  
Veteran's Employment,*  
(269) 660-1412

» Provides in-person interpreters in Spanish, Hakha, Falam, and Burmese as well as over 200 other languages through a telephone interpreting service, & document translation in almost any language. Charges fee for organizations but not community members.

# CHILDREN'S LITERACY

Calhoun Great Start Collaborative  
(269) 660-1606 x6143

## Early Childhood

## School Age

### Story Time and Playgroups

Albion District Library  
*Free Story Time and Interactive Activities*  
(517) 629-3993

Barnes and Noble  
*Free Story Time*  
(269) 979-8060

Calhoun Intermediate School District Early Childhood Programs and Services  
(269) 660-1606 x6143

Early Childhood Connections  
(269) 660-1606 x6143

Marshall District Library  
(269) 781-7821

Willard Library & Helen Warner Branch  
*Story time and activities Ages 0-5*  
(269) 968-8166  
[www.willardlibrary.org](http://www.willardlibrary.org)

### Information

Community Literacy Collaborative  
*Reading and Building Language*  
(269) 962-9538

Early On Child Development Concerns  
(269) 660-2732

Early Childhood Connections  
(269) 660-1606 x6143

Great Start Collaborative  
(269) 660-1606 x6143

### Reading at Home

Early Childhood Connections  
*Home Visits*  
(269) 660-1606 x6143

Imagination Library  
*Early Literacy Programs*  
(269) 968-8166

Raising a Reader  
*Share reading with your child*  
(269) 660-1606

Willard Library & Helen Warner Branch  
*Tumblebooks Online Reading Ongoing Incentive Reading Programs*  
(269) 968-8166  
[www.willardlibrary.org](http://www.willardlibrary.org)

### Readiness Activities

Urban League Kids Village  
*Summer K-5 Reading Program*  
(269) 962-5553

Marshall District Library  
*After School Program and Teen Book Club*  
(269) 781-7821

Willard Library & Helen Warner Branch  
*Kids & Teen Reading Nights & Special Events*  
(269) 968-8166  
[www.willardlibrary.org](http://www.willardlibrary.org)

### Tutoring and Remediation

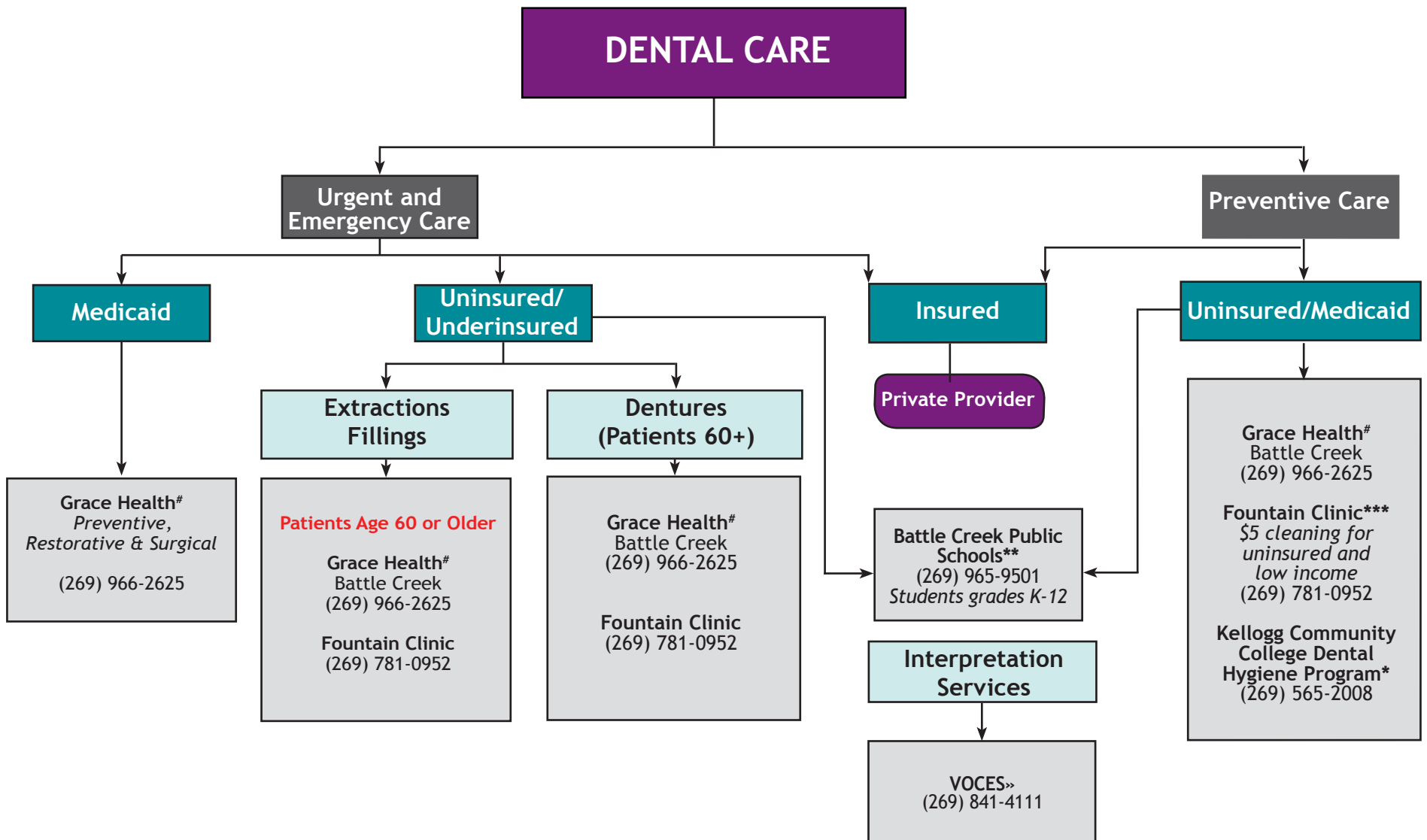
Binda Dyslexia Center\*  
*Tutoring for students with dyslexia /sliding scale fee*  
(269) 964-3395

Second Baptist Church  
*After-school Literacy Tutoring Program (Free)*  
(269) 963-4640

Sylvan Learning Center  
*Tutoring (Fee)*  
(269) 979-0025

West Michigan Virtual Academy  
*Must be Enrolled*  
(269) 441-9463

\*No diagnosis required, all children with difficulties welcome.



\* The KCC Dental Hygiene Program is preventive only and accepts all individuals, regardless of income/insurance status and accepts only cash, check or charge.

\*\* Dental Services offered through Battle Creek Public Schools for students of Battle Creek Public Schools who qualify for free or reduced-price lunch.

\*\*\* Fountain Clinic does not accept Medicaid or Medicare.

# Availability of fillings/dentures dependent on Senior Millage funding. Dentures can be funded through Medicaid. Preventive care available only for those with Medicaid.

» Provides in-person interpreters in Spanish, Hakha, Falam, and Burmese as well as over 200 other languages through a telephone interpreting service; document translation in almost any language. Charges fee for organizations but not community members.

# DISABILITY SERVICES

211 or (269) 565-4159

## Advocacy Assistance

Michigan Protection & Advocacy Service, Inc.  
(800) 288-5923  
(517) 487-1755

The Arc  
(269) 966-2575

**Education**  
Disability Network  
(269) 345-1516

Michigan Alliance for Families  
(800) 552-4821

Michigan Dept of Education-Office of Special Education  
(517) 373-0923

Michigan Special Education Mediation Program  
(800) 873-7658

**Housing**  
Fair Housing Act Enforcement Center  
(800) 765-9372

Michigan Dept of Civil Rights  
(800) 482-3604

## Financial Solutions

**Disability Benefits**  
Department of Health & Human Services  
www.mibridges.michigan.gov

Social Security Administration  
www.socialsecurity.gov  
800-772-1213  
TTY 800-325-0778

**Employment**  
Michigan Rehabilitation Services (MRS)  
Main Office  
(269) 968-3311

## Home/Assistive Devices

Children's Special Healthcare Insurance Program  
(269) 969-6390

The Arc Bates Trust  
(269) 966-2575

Disability Network Assistive Technology Loan Fund  
(269) 345-1516

Habitat for Humanity  
Wheelchair Ramps, Roofing & Siding  
(269) 966-2502

Lending Hands  
Non-motorized medical and assistive devices  
(269) 567-4381

North Ave Church of God  
(269) 965-1908

Carewell Services SW  
For Seniors Only  
(800) 626-6719

Rural Development\*  
Only for residents outside of Battle Creek  
(269) 657-7055 x4

## Support Groups

Complete list at  
www.dnswm.org

## Interpretation Services

Deaflink  
(269) 288-0464

## Information

The Arc  
For Developmental Disabilities  
(269) 966-2575

Disability Network  
(269) 345-1516

Summit Pointe Autism Center  
(269) 441-2700

Michigan Protection and Advocacy Service, Inc.  
(800) 288-5923

## Transportation

SEE MEDICAL TRANSPORTATION

\* Residents aged >62 with very low income may qualify for a grant. If a resident is younger than 62 with very low income, they may qualify for a loan.

# DISASTER RESPONSE

If an Emergency: Call 911  
For Information: Call 211 or (269) 565-4159

## Emergency Shelter

American Red Cross  
(296) 962-7528

Salvation Army  
(269) 963-3640

### Emergency Shelter for Pets

All Species Kinship  
(877) 596-7776

## Emergency Assistance

American Red Cross  
(296) 962-7528

Charitable Union  
(269) 964-7234  
*Clothing/Small Household Items*

Albion Interfaith Ministries  
*Albion and Homer*  
(517) 629-5260

Salvation Army  
(269) 966-4162

Southern Baptist  
Chainsaw Crew  
(810) 714-1907 or  
(810) 923-2666

Department of  
Health & Human Services  
(269) 966-1284  
*State Emergency Relief*

## Food Assistance

American Red Cross  
(269) 962-7528

Food Bank of  
South Central Michigan  
*Call 211 for your local food  
pantry*

Albion Interfaith Ministries  
(517) 629-5260  
*Albion and Homer*

Salvation Army  
(269) 966-4162

Department of Health &  
Human Services  
(269) 966-1284

## Communications

**Emergency Communications**  
Calhoun County  
Emergency Management  
(269) 969-6430

Battle Creek  
Emergency Management  
(269) 966-3550

**Information Services**  
[www.consumersenergy.com/  
outagemap](http://www.consumersenergy.com/outagemap)  
*Consumers Energy Outage Map*

[www.nixle.com](http://www.nixle.com)  
*Text/email alerts from local  
police department*

## Mental Health

Summit Pointe  
24 Hour Crisis Hotline  
(800) 632-5449

Family & Children Services  
(269) 965-3247

Bronson Battle Creek  
Emergency Room  
(269) 245-8111

Oaklawn Hospital  
Emergency Room  
(269) 781-4484

## Volunteer Training

American Red Cross  
(296) 962-7528

HandsOn Battle Creek  
(269) 966-4189

Calhoun County  
Health Department  
(269) 969-6492

## Seniors

Area Agency on Aging  
(269) 966-2450

Albion Forks Senior Center  
(517) 629-3842

Kool Family Community  
Center  
(269) 965-0000

Community Action  
*Transportation for Ages 60+*  
(877) 422-2726

## Disaster Preparedness

American Red Cross  
(296) 962-7528  
[www.ready.gov](http://www.ready.gov)

Calhoun Co. Emergency  
Management  
[www.calhouncountysheriff.info](http://www.calhouncountysheriff.info)

Battle Creek Emergency  
Management  
(269) 969-6430

## Damage Assessment

American Red Cross  
(269) 962-7528

Private Insurance Agent

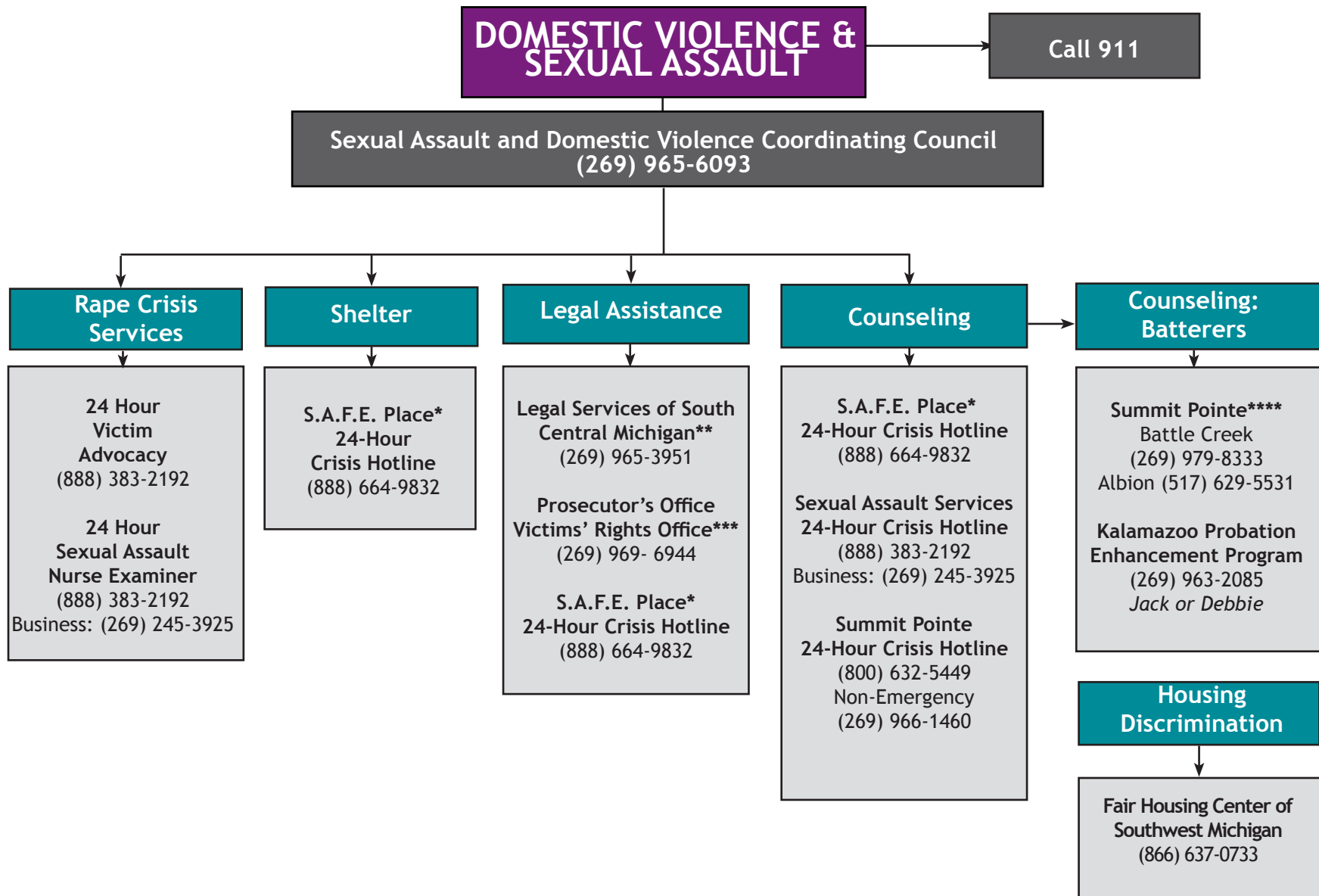
## Interpretation Services

Burma Center  
(269) 441-1131

VOCES»  
(269) 841-4111

CIR - Deaflink  
(269) 288-0464

» Provides in-person interpreters in Spanish, Hakha, Falam, and Burmese as well as over 200 other languages through a telephone interpreting service, & document translation. Charges fee for organizations but not community members.



\* S.A.F.E. Place shelter services for victims of intimate partner violence and their children.

\*\* Legal Services of SCM clients must meet poverty criteria; does not handle criminal proceedings.

\*\*\* The Police Department makes a referral to the Victims Rights Office after a police report has been filed.

\*\*\*\* Summit Pointe and Kalamazoo Probation Enhancement Program meet the Governor's standards for batterer intervention programming for males.

# EARLY CHILDHOOD

Great Start Collaborative  
(269) 660-1606 x6143

## Families

### Parenting & Advocating

Early Childhood Connections  
[www.calhouncgreatstart.org](http://www.calhouncgreatstart.org)  
(Battle Creek)  
(269) 660-1606 x6143

Great Start Parent Coalition  
[www.calhouncgreatstart.org](http://www.calhouncgreatstart.org)  
(Calhoun County)  
(269) 660-1606 x6143

### Preschool Enrollment

Early Head Start (877) 422-2726  
Great Start Readiness Program,  
Early Head Start and Head Start  
and Three Year Old Scholarship  
Program  
[www.mychildneedspreschool.com](http://www.mychildneedspreschool.com)  
(269) 660-1606 x6143

Private Preschool  
[www.greatstarttoquality.org](http://www.greatstarttoquality.org)

### Health and Nutrition

Choose Health Calhoun  
A Workgroup of the  
Regional Health Alliance  
(269) 962-2181

Women, Infants & Children (WIC)  
[www.michigan.gov/wic](http://www.michigan.gov/wic)  
(269) 969-6860

Your Pediatrician or Family Doctor

### Developmental Concerns

Early Childhood Connections  
[www.calhouncgreatstart.org](http://www.calhouncgreatstart.org)  
(269) 660-1606 x6143

Early On  
[www.1800earlyon.org](http://www.1800earlyon.org)  
(269) 441-1853

Summit Pointe Autism Center  
(269) 441-2700  
Must have Medicaid

### Childcare

List of Licensed Providers  
[www.greatstarttoquality.org](http://www.greatstarttoquality.org)

Child Care Resources  
[www.ccr4kids.org](http://www.ccr4kids.org)  
(800) 343-3470  
(269) 349-3296

Financial Assistance  
Department of Health &  
Human Services  
[www.mibridges.michigan.gov](http://www.mibridges.michigan.gov)  
(269) 966-1284

Information  
Child Care Resources  
[www.ccr4kids.org](http://www.ccr4kids.org)  
(800) 343-3470  
(269) 349-3296

## Providers

### Licensing

Child Care Licensing  
[www.michigan.gov/michildcare](http://www.michigan.gov/michildcare)  
(269) 337-5066

### Professional Development and Quality Improvement

Calhoun County  
Child Care Resources  
[www.ccr4kids.org](http://www.ccr4kids.org)  
(800) 343-3470  
(269) 349-3296

Kellogg Community College  
Early Childhood and Teacher  
Education  
[www.kellogg.edu/academics/academic-programs/education/early-childhood-education](http://www.kellogg.edu/academics/academic-programs/education/early-childhood-education)  
(269) 565-2109

Battle Creek  
Early Childhood Connections  
[www.calhouncgreatstart.org](http://www.calhouncgreatstart.org)  
(269) 660-1606 x6143

## Community

### Volunteer Opportunities

Great Start Collaborative  
[www.calhouncgreatstart.org](http://www.calhouncgreatstart.org)  
(269) 660-1606 x6143

HandsOn Battle Creek  
[www.handsonbc.org](http://www.handsonbc.org)  
(269) 966-4189

### Information & Data

Early Childhood Connections  
[www.calhouncgreatstart.org](http://www.calhouncgreatstart.org)  
(Battle Creek)  
(269) 660-1606 x6143

Great Start Collaborative  
[www.calhouncgreatstart.org](http://www.calhouncgreatstart.org)  
(269) 660-1606 x6143

### Basic Needs

2-1-1

Department of Health &  
Human Services  
[www.mibridges.michigan.gov](http://www.mibridges.michigan.gov)  
(269) 966-1284

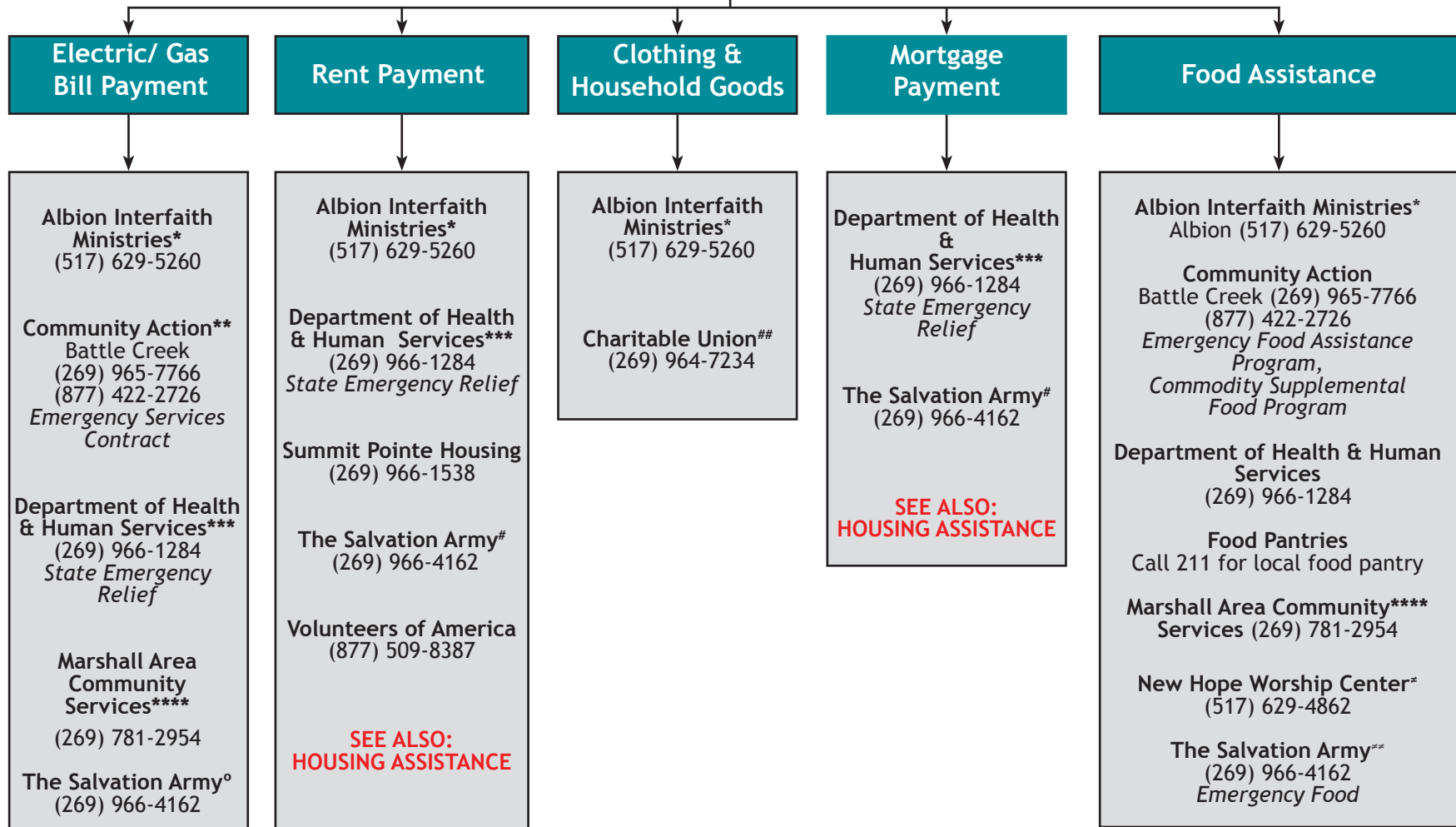
### Kindergarten Enrollment

Call the School District  
in which you live



# EMERGENCY ASSISTANCE

211 or (269) 565-4159



\* AIM serves residents of Albion and Homer areas only after all other agencies have denied services.

\*\* One time emergency. Must be referred by DHHS first. Availability of funds dependent upon receipt of grants to cover costs.

\*\*\* State Emergency relief for bill payment has an annual maximum. Must have shut off notice or eviction notice to access services.

\*\*\*\* Only for Marshall residents. Call for current eligibility requirements.

° Salvation Army must have shut off notice and DHHS decision notice if available. Must go through 211. Limited by annual cap.

# Must be referred through 211 and present decision notice from DHHS.

## Must demonstrate need, usually by presenting Medicaid card, Bridge card or acquiring referral through 211. Also helps individuals who have a barrier for employment (e.g., medical scrubs, steel-toed boots, etc.); referral comes from employer.

≠ Food distribution once per month on 4th Saturday from 9:00 a.m. - 11:00 a.m.

≠≠ Salvation Army Emergency Food requires State ID for everyone over 18 and Social Security cards for entire household. M-F, Noon-3:30 P.M.

# FINANCIAL SERVICES

211 or  
(269) 565-4159

## Individual Financial Counseling

**Advia Credit Union**  
(844) 238-4228

**Goodwill Industries**  
*Financial Opportunity Center*  
(269) 788-6500

**GreenPath Debt Solutions**  
(269) 963-4575  
*Debt Management Program;  
Debt Repayment - Fee for Service*

**Guardian Finance and Advocacy Services**  
(269) 963-3253, 24 Hour Service: (866) 963-3253

**Southwest MI Community Development Corp\*\***  
(269) 968-1113

## Budgeting

**Goodwill Industries**  
*Financial Opportunity Center*  
(269) 788-6500

**Guardian Finance & Advocacy Services**  
(269) 963-3253, 24 Hour Service: (866) 963-3253

**Kellogg Community College\***  
(269) 965-4134

**Southwest MI Community Development Corp.\*\***  
(269) 968-1113

## Financial Literacy

**Advia Credit Union**  
(844) 238-4228

**Goodwill Industries**  
*Financial Opportunity Center*  
(269) 788-6500

**Kellogg Community College**  
(269) 965-4134

**Southwest MI Community  
Development Corp\*\***  
(269) 968-1113  
*Home Ownership Lending Program  
Financial Fitness Education Program*

## Representative Payeeship; Conservatorship; Money Management

**Guardian Finance and Advocacy Services**  
(269) 963-3253 or (866) 963-3253 (24hr)

For complete list:  
**Calhoun County Probate Court**  
(269) 969-6795

## Taxes

**Goodwill Industries**  
*Financial Opportunity Center*  
(269) 788-6500

Private Provider

## Credit Rebuilding

**Advia Credit Union**  
(844) 238-4228

**Goodwill Industries**  
*Financial Opportunity Center*  
(269) 788-6500

**GreenPath Debt Solutions** (800) 550-1961  
*Debt Management Program;  
Debt repayment - Fee for Service*

**Guardian Finance and Advocacy Services**  
(269) 963-3253, 24 Hour Service  
(866) 963-3253

**Southwest MI Community  
Development Corp.\*\***  
(269) 968-1113

\* Various classes are offered for a fee.

\*\* Also offers: down payment assistance programs, foreclosure mitigation and HUD-certified counseling.

To learn about becoming a foster parent,  
call 269-966-1356

# FOSTER CARE RESOURCES

## Shelter & Housing

**ARK Children's Shelter**  
*For Ages 10 - 17*  
Kalamazoo (269) 343-8765

**Battle Creek Housing Commission**  
(269) 965-0591

**The Haven of Rest Ministries**  
(269) 965-1148

**In As Much House Shelter**  
*Shelter for Homeless Families*  
(269) 660-2945

**S.A.F.E. Place Shelter**  
*Domestic Violence Shelter*  
(269) 965-6093  
Crisis (269) 965-7233

## Licensing and Placement

**Bethany Christian Services**  
(269) 372-8800

**Calhoun County  
Department of Health &  
Human Services**  
(269) 966-1284

**Family & Children's Services**  
(269) 965-3247

**Samaritas**  
(269) 345-5776

**Starr Commonwealth**  
(800) 860-1845

**City LinC Youth Guidance**  
(269) 969-9438

## Information, Resources, Support

**211**  
Call 211 or (269) 565-4159

**Calhoun County Foster Care  
Coalition**  
www.fosteringcalhoun.org  
(269) 966-1356

**Calhoun County Prosecutor's Office**  
(269) 969-6980

**Calhoun County Public Health Dept.**  
(269) 969-6370

**Domestic Violence Support Group**  
(269) 385-3587

**Legal Services of  
Southwest Michigan**  
(269) 965-3951

**Michigan Youth Opportunities  
Initiative**  
(269) 579-0871

**Women's Co-op**  
(269) 966-8988

## Assessment & Treatment Services

### Mental Health

**Early On Calhoun County** (269) 660-2732

**Family & Children's Services** (269) 965-3247

**Families First of Michigan** (517) 610-3193  
*Intensive, Short-Term Crisis Intervention,  
Family Education (in-Home)*

**Highfields** (517) 887-2762  
*Families Together Building Solutions\*  
(program to prevent out-of-home placement)*

**Nottawaseppi Huron Band of the Potawatomi**  
*For the Native-American Population*  
Call for More Details (269) 729-4422

**Sexual Assault Services of Calhoun County**  
(269) 245-3925

**Southwest Michigan Children's  
Trauma Assessment Center**  
(269) 387-7073

**Summit Pointe** (269) 966-1460

### Substance Abuse

**Alcoholics Anonymous** (269) 964-7577

**Narcotics Anonymous** (800) 230-4085

**Psychological Consultants of Michigan**  
(269) 968-2811

### Employment

**Michigan Works! Southwest**  
(269) 660-1412 or (800) 288-9675  
*Job Skills, Placement/Youth Services Programs*

**PATH Program\*** (269) 966-0608

### Physical Health Care

**Grace Health**  
(269) 965-8866

## For Foster Parents

**Big Family of Michigan**  
(586) 415-6968

**Calhoun County Foster Care  
Coalition**  
www.fosteringcalhoun.org  
(269) 966-1356

**Family Enrichment Center**  
(269) 660-0448

**Foster Care Navigators Program**  
(855) 642-4543

**Michigan Adoption  
Resource Exchange**  
(800) 589-6273

**Michigan Association for Foster,  
Adoptive & Kinship Parents**  
www.mafak.co

**Michigan Department of Health &  
Human Services**  
www.michigan.gov/dhslicensing/

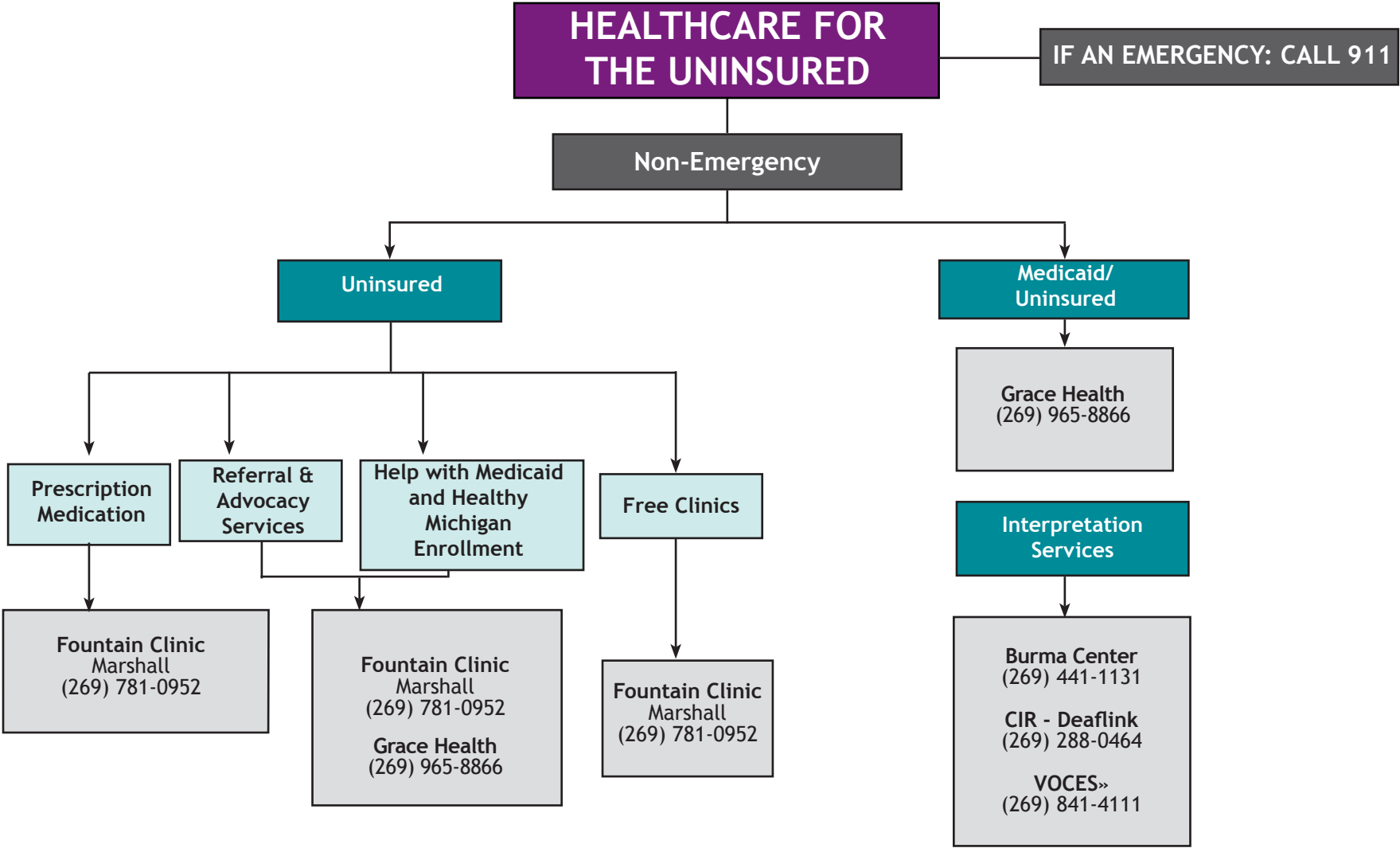
**The Office of Children's  
Ombudsman**  
(800) 642-4326

**Women Infants and Children**  
(269) 969-6860

**Safe Sleep Information  
and Resources**  
*Cribs for Kids*  
www.cribsforkids.org

**Tomorrow's Child - Michigan SIDS**  
(800) 331-7437

\*Must have a DHHS Referral.



» Provides in-person interpreters in Spanish, Hakha, Falam, and Burmese as well as over 200 other languages through a telephone interpreting service, & document translation in almost any language. Charges fee for organizations but not community members.

# HOUSING ASSISTANCE

211 or (269) 565-4159

Homeless Coalition of Greater Battle Creek and Calhoun County  
(269) 441-5904

Check for current vacancies at [www.michiganhousinglocator.com](http://www.michiganhousinglocator.com)

## Low Cost Homes

**Battle Creek Housing Commission**  
(269) 965-0591  
*Rent to Own*

**Habitat For Humanity**  
(269) 966-2502

**Southwest Michigan Development Corp.**  
(269) 968-1113

## Rent Payment Assistance

**Albion Interfaith Ministries\***  
(517) 629-5260

**Community Action#**  
(269) 965-7766

**Department of Health & Human Services**  
(269) 966-1284  
*State Emergency Relief*

**The Salvation Army#**  
*Must Meet Affordability Standards*  
(269) 966-4162

**Summit Pointe Housing##**  
(269) 966-1538

**Volunteers of America**  
(877) 509-8387

## Home Rehabilitation

**City of Battle Creek Minor Home Repair Program**  
(269) 966-3323

**Community Action#**  
(269) 965-7766

**Department of Health & Human Services**  
(269) 966-1284  
*State Emergency Relief*

**Habitat For Humanity**  
(269) 966-2502

## Housing Discrimination

**Fair Housing Center of Southwest Michigan**  
(269) 962-5553 x15

## Subsidized Housing (Rent Based on Income)

*application may result in placement on waiting list*

<b>Bent Tree</b> (269) 962-4617	<b>Northside Drive West</b> (269) 965-0591
<b>Ellsworth Apartments</b> (517) 568-3360	<b>Northview Homes</b> (517) 629-2511
<b>Garfield Apartments</b> (517) 568-3360	<b>Oak Meadows</b> (517) 629-2233
<b>Grandview Heights</b> (517) 629-2511	<b>Parkway Manor</b> (269) 965-0591
<b>Gristmill Apartments</b> (517) 568-3620	<b>Silver Star (Veterans Only)</b> (269) 964-6000
<b>Liberty Commons</b> (269) 962-6209	<b>Teal Run</b> (269) 979-5432
<b>Lincolnshire of Albion</b> (517) 629-4270	<b>Village at Irving Park</b> (269) 964-0517
<b>Maple Grove Apartments</b> (517) 629-2026	

## Emergency Shelter

**The Haven**  
(269) 965-1148  
*Inasmuch House for Women, Children and Families; Men's Shelter*

**The SHARE Center Day Shelter**  
(269) 964-8133

**Disaster Victims**  
**American Red Cross**  
(269) 962-7528

**Domestic Violence Victims**  
**S.A.F.E. Place**  
24-Hour Crisis Line  
(888) 664-9832  
Fax: (269) 966-2503

## Mortgage Payment Assistance

**Community Action#**  
(269) 965-7766 or (877) 422-2726

**Department of Health & Human Services**  
(269) 966-1284  
*State Emergency Relief*

**The Salvation Army#**  
(269) 966-4162

## Eviction Prevention

**211**

**Fair Housing Center of Southwest Michigan**  
(269) 962-5553 x15

**Legal Services of South Central Michigan\*\*\***  
(269) 965-3951

**Southwest Michigan Development Corp.**  
(269) 968-1113  
*Mortgage Foreclosure Mitigation and Housing Counselors*

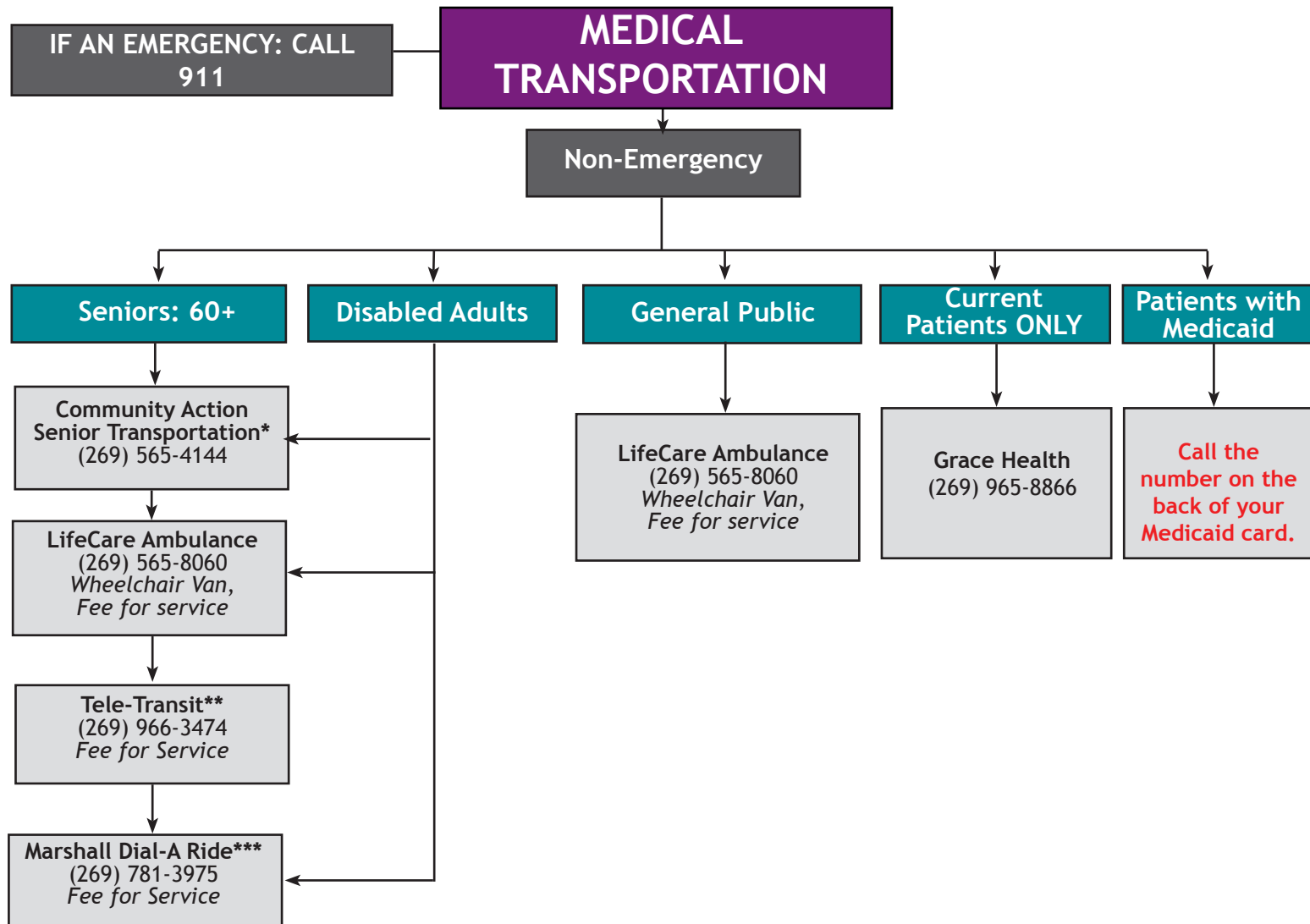
**Summit Pointe Housing##**  
(269) 966-1538

**Volunteers of America**  
*Also Offers Assistance to Veterans*  
(877) 509-8387

# Must be referred through 211 and have a decision notice from DHHS  
## Must have decision notice from DHHS.

\* Services through Albion Interfaith Ministries (AIM) are available to residents of Albion and Homer areas when all other services are denied. Requires referral through 211.

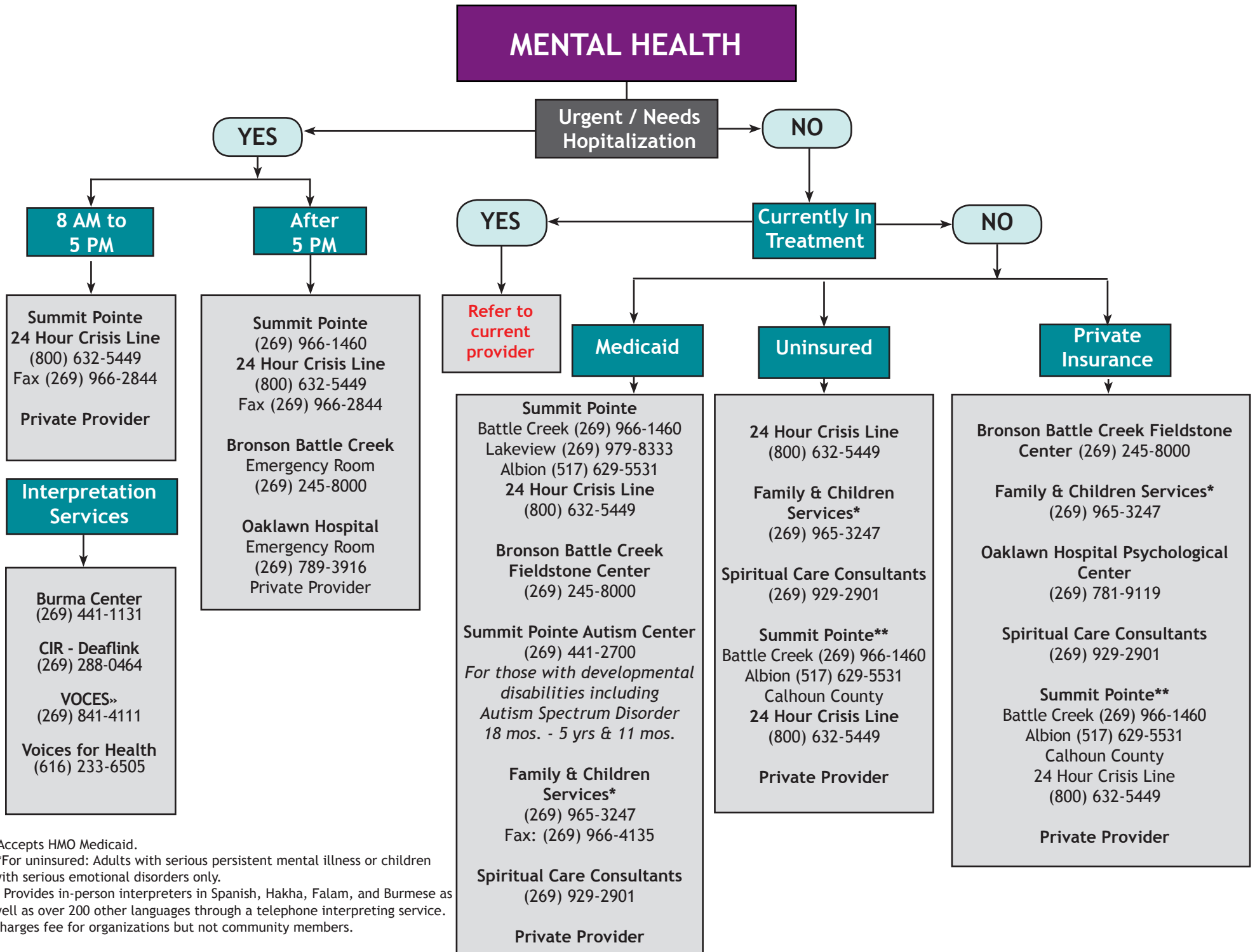
\*\* Must have documentable income and no felonies on record  
\*\* Tax foreclosure cases must be referred through 211.



\*\* Services are available for medical and non-medical transportation for Calhoun County residents traveling within Calhoun County and funded by Calhoun County Senior Millage and the Michigan Department of Transportation.

\*\* Available for all transportation services on M-F, 5:15 AM to 11:30PM. FARES: \$7.00 each way; \$2 for elderly/disabled. Disabled must show transit I.D. or Medicare I.D. Card to receive \$2 fee. Passengers must be able to get themselves to the vehicle. Area Limitations: Kirby Rd, B Drive North, Glenn Cross Road, St. Mary's Lake Rd, 9 1/2 Mile Rd.

\*\*\* Available Monday-Friday from 7 a.m. to 6 p.m. with last phone calls at 5:30 p.m. Advance scheduling recommended. Exact change or tokens are required, call for rates.



\*Accepts HMO Medicaid.

\*\*For uninsured: Adults with serious persistent mental illness or children with serious emotional disorders only.

» Provides in-person interpreters in Spanish, Hakha, Falam, and Burmese as well as over 200 other languages through a telephone interpreting service. Charges fee for organizations but not community members.



# PRENATAL/OBSTETRICS

Call 211 OR (269) 565-4159

## Pregnancy Testing

Alternatives of Battle Creek  
(269) 288-2890

CityLinC (269) 969-9181  
(Free)

Calhoun County Public Health Department  
(269) 969-6363

Grace Health  
(269) 965-8866

Marshall Pregnancy Center  
(269) 274-2925  
(Free)

## Home Visit Services

Early Childhood Connections and Healthy Start  
(269) 660-1606 x6143

Maternal Infant Health Program  
Grace Health  
(269) 441-6814

MI-Adolescent Pregnancy & Parenting Program  
(269) 969-6393

Nurse Family Partnership  
(269) 969-6392

\* Free - accepts donations.

+ \$40 for all classes offered or free if on Medicaid.

» Provides in-person interpreters in Spanish, Hakha, Falam, and Burmese as well as over 200 other languages through a telephone interpreting service. Charges fee for organizations but not community members.

## Pregnancy Prevention Resources

Calhoun County Public Health Department  
(269) 969-6363

Substance Abuse Council  
(269) 966-7580

**Contraceptives**

Calhoun County Public Health Department  
*Condoms Only*  
(269) 969-6363

Grace Health (269) 965-8866

### STI Testing

Calhoun County Public Health Department  
(269) 969-6363

Grace Health  
(269) 965-8866

Private Provider

## Interpretation Resources

Burma Center (269) 441-1131  
VOCES» (269) 841-4111

## Prenatal Resources

**Childbirth Education**  
Bronson Battle Creek (269) 341-7723  
(800) 451-6310  
bronsonhealth.com/classes

CitiLinC  
Women's Resource Center (269) 969-9181

Oaklawn Hospital Birth Center+ (269) 789-3929

**Goals/Leadership/Decision Making/Family**  
Battle Creek Family YMCA  
(269) 288-0023

**Nutrition**  
Women Infant Children (WIC) (269) 969-6860

**Breastfeeding Education**  
Bronson Battle Creek (Free) (269) 245-8586

Grace Health  
(269) 441-3443 (Business Hours)  
24 Hour and Weekend Line (269) 965-8866

Oaklawn Hospital Birth Center+ (269) 789-3929

Women Infants & Children (WIC) (269) 969-6860

**Medicaid for Pregnant Women**  
www.mibridges.michigan.gov

Department of Health & Human Services  
(269) 966-1284

Women Infants & Children (WIC)  
(269) 969-6860

**Obstetrics**  
Grace Health (269) 441-3443

**All Options Counseling**  
Private Provider

**Smoking Cessation**  
SEE SUBSTANCE ABUSE

## Resources New Parents

**Immunizations**  
Calhoun County Public Health Department  
(269) 969-6363

Grace Health  
(269) 965-8866

**Child Care**  
Child Care Resources  
(269) 349-3296 or  
(800) 343-3470

**Insurance and/or Financial Resources**  
Department of Health & Human Services  
(296) 966-1284

**Resources for Infant Needs**  
Albion Interfaith Ministries  
(517) 629-5260

Alternatives of Battle Creek  
(269) 288-2890

Charitable Union (269) 964-7234

Infant Safe Sleep Information  
(800) 331-7437

**Nutrition**  
Women Infants & Children (WIC)  
(269) 969-6860

**Early Childhood Education**  
Community Action Head Start  
(877) 422-2726

Calhoun Intermediate School District  
(269) 660-1606



# PUBLIC BENEFITS

211 or (269) 565-4159

## Emergency Assistance

Charitable Union  
(269) 964-7234  
*Clothing and Household Items*

Community Action  
Battle Creek  
*Assistance with Utilities*  
(269) 965-7766  
(877) 422-2726

Department of Health & Human Services  
(269) 966-1284  
*State Emergency Relief*

Salvation Army  
(269) 966-4162

Summit Pointe Housing<sup>o</sup>  
(269) 966-1538

## Legal Services

Legal Services of South Central Michigan  
(269) 965-3951

Private Provider

## Cash Assistance

Department of Health & Human Services  
(269) 966-1284

**Disabled Adults**  
*State Disability Assistance*

**General Public**  
*Family Independence Program*

Social Security Administration  
Local Office: (877) 445-0829  
Toll-Free: (800) 772-1213  
TTY (800) 325-0778  
*Supplemental Security Income\*  
Social Security Disability Insurance\*\**

## Bill Payment

Community Action<sup>#</sup>  
Battle Creek (269) 965-7766

Department of Health & Human Services  
(269) 966-1284  
*State Emergency Relief,  
Energy Direct,  
Weatherization Assistance Program,  
Home Heating Credit,  
ChildCare Assistance*

Salvation Army  
*Consumers, SEMCO Payments*  
(269) 966-4162

## Food Assistance

Albion Interfaith Ministries\*  
Albion (517) 629-5260

Calhoun County Health Department  
(269) 969-6860  
*Women, Infants and Children (WIC)*

Community Action  
Battle Creek (269) 965-7766  
(877) 422-2726  
*Emergency Food Assistance Program,  
Commodity Supplemental Food Program*

**Adults Over Age 60**  
(269) 965-7766  
*Home Delivered Meals  
Congregate Meals*

Department of Health & Human Services  
(269) 966-1284  
*Food Assistance Program*

Food Bank of South Central Michigan  
Call 211 for your local food pantry

The Haven of Rest\*\*\*  
(269) 965-1148

Salvation Army  
Battle Creek (269) 966-4162  
*Soup Kitchen, Emergency Food*

## Health Care

Calhoun County Public Health Department  
(269) 969-6363  
*Children's Special Health Care Services, Immunizations,  
Pregnancy Testing, TB Testing,  
Hearing and Vision Screening,  
STI/HIV Testing*

Department of Health & Human Services  
(269) 966-1284

**Adults**  
*Medicaid  
Medicare  
Healthy Michigan*

**Adults Over Age 65**  
*Medicare*

**Children**  
*Medicaid  
MI Child*

Grace Health  
(269) 965-8866

Fountain Clinic\*\*  
Marshall: (269) 781-0952

Veterans Affairs Medical Center of Battle Creek  
(269) 966-5600

Private Provider

**SEE ALSO:  
HEALTHCARE FOR  
THE UNINSURED**

<sup>o</sup> Must be homeless or have pending eviction notice, requires decision notice from DHHS.

\* For individuals who are over 65, blind or disabled with limited income, based on need.

\*\* Based on how long you have worked and paid Social Security taxes. Tax-funded, US Government supplemental income program for individuals no longer able to work due to a disability.

# One time emergency. Must be referred by DHHS first. Availability of funds dependent upon receipt of grants to cover costs.

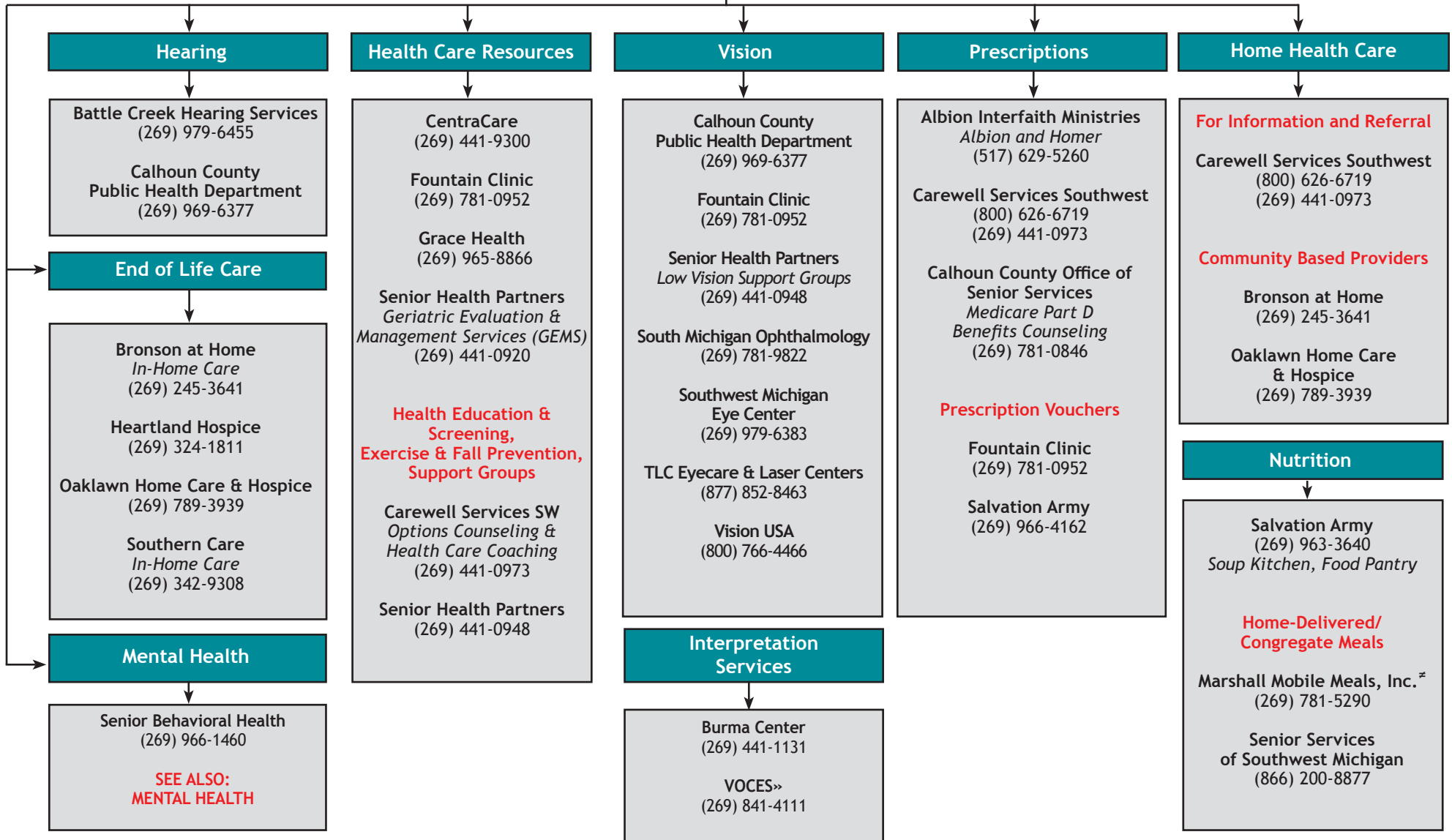
≠ Serves residents of Albion and Homer area.

\*\*\* Free meals for residents during the week; and residents and non-residents on holidays and weekends when Salvation Army Soup Kitchen is closed.

++ Free for all residents of Calhoun County. Must meet income guidelines and have no form of insurance.

# SENIOR HEALTH SERVICES

ADDITIONAL INFORMATION AND ASSISTANCE CAN BE FOUND BY CONTACTING CAREWELL SERVICES SOUTHWEST AT (800) 626-6719 or (269) 441-0973



> Congregate Meals are offered at various sites in Calhoun County including Albion, Battle Creek, Homer and Marshall.

> Food Pantries are available with a referral from 211 or the Department of Human Services.

>> Provides in-person interpreters in Spanish, Hakha, Falam, and Burmese, as well as over 200 other languages through a telephone interpreting service. Charges fee for organizations but not community members.

‡ Area served lies between 15 Mile Road and 19 Mile Road, B Drive South and H Drive North.

# SENIOR HOUSING

ADDITIONAL INFORMATION AND ASSISTANCE CAN BE FOUND BY CONTACTING CAREWELL SERVICES SOUTHWEST AT (800) 626-6719 OR (269) 441-0973

## Subsidized/Independent Living

Independent Living for seniors refers to residence in a compact, easy to maintain, private apartment or house within a community of seniors.

**Albion Housing Commission**  
*Mather Housing*  
*Peabody Place*  
(517) 629-2511

**Battle Creek Housing Commission**  
*Cherry Hill Manor*  
*Kellogg Manor*  
(269) 965-0591

**Bedford Manor Apartments**  
*Age 62 and Older*  
(269) 962-3561

**Bent Tree Apartments** (269) 962-4803

**Lakeview Meadows** (269) 968-0300

**Maple Grove Apartments**  
Albion (517) 629-2026

**Marshall House Apartments**  
(269) 781-2391

**Springview Towers** (269) 968-9105

**The Village of Mill Creek**  
(269) 962-0605

**Westbrook Place** (269) 753-0062

## Assisted Living

Providing a unique combination of housing, personal care services, and health care, assisted living is the perfect option for people who need help with normal daily activities in a way that promotes maximum independence.

**The State of Michigan regulates licensing of these types of facilities and the status can change frequently.**

**For assistance in finding options in your area, please contact:**

**Carewell Services Southwest**  
(800) 626-6719  
(269) 966-2450

or

[http://www.dleg.state.mi.us/brs\\_afc/sr\\_afc.asp](http://www.dleg.state.mi.us/brs_afc/sr_afc.asp)

## Housing Discrimination

**Fair Housing Center of Southwest Michigan**  
(269) 276-9100  
(866) 637-0733

## Skilled Nursing

A Nursing Home, also known as a Skilled Nursing Facility or SNF, has Registered Nurses who help provide 24-hour care for people who can no longer care for themselves due to physical, emotional, or mental conditions.

**Calhoun County Medical Care Facility**  
(269) 962-5458

**Evergreen Senior Care & Rehab**  
(269) 969-6110

**Heartland Health Care Center**  
(269) 965-3327

**Laurels of Bedford**  
(269) 968-2296

**The Manor of Battle Creek**  
(269) 969-6244

**Marshall Nursing and Rehabilitation Community**  
(269) 781-4281

**Medi-Lodge of Marshall**  
(269) 781-4251

**The Oaks at Northpointe Woods**  
(269) 964-4655

## Adult Foster Care

Adult Foster Care is defined as a home setting in the community for adults who are unable to live independently due to physical, emotional, developmental or mental health impairments.

**The State of Michigan regulates licensing of these types of facilities and the status can change frequently.**

**For assistance in finding options in your area, please contact:**

**Carewell Services Southwest**  
(800) 626-6719  
(269) 441-0973

or

[http://www.dleg.state.mi.us/brs\\_afc/sr\\_afc.asp](http://www.dleg.state.mi.us/brs_afc/sr_afc.asp)

# SENIOR SERVICES

ADDITIONAL INFORMATION AND ASSISTANCE CAN BE FOUND BY CONTACTING CAREWELL SERVICES SOUTHWEST AT (800) 626-6719 OR (269) 441-0973

## Respite & Caregiver

Bronson At Home  
(844) 241-4663

Senior Health Partners  
(269) 441-0920

## Home Repair

City of Battle Creek  
*Minor Home Repair Program*  
(269) 966-3323

Community Action  
*Minor Home Repairs*  
(269) 965-7766  
(877) 422-2726

## Social/Recreational Resources

Albion Forks Senior Center  
(517) 629-3842

Kool Family Community Center  
*Senior Activities Programming*  
(269) 965-0000

YMCA  
(269) 963-9622

Community Action  
*Foster Grandparent Program*  
(269) 965-7766

## Kinship Care

Family Enrichment Center  
(269) 660-0448

## Information and Assistance

Carewell Services SW  
(269) 441-0973  
(800) 626-6719

Calhoun County Office of Senior Services  
(269) 781-0846

211 or (269) 565-4159

## Adult Day Services

CentraCare  
*(current customers only)*  
(269) 441-9300

Marian E. Burch Adult Day Center  
(269) 962-1750

## Legal Resources

**Elder Abuse Prevention**  
Adult Protective Services  
(855) 444-3911

Bureau of Health Systems  
Complaint Unit  
(800) 882-6006

Elder Law of Michigan  
(866) 400-9164

Legal Hotline for Michigan Seniors  
(800) 347-5297

Legal Services of South Central Michigan  
(269) 965-3951  
(800) 688-3951

Longterm Care Ombudsman  
(866) 485-9393

## Financial Resources

Guardian Financial & Advocacy Services  
*Money Management, Guardianship, Conservatorship*  
(269) 963-3253

Southwest Michigan Community Development Corp.  
(269) 968-1113  
*Mortgage foreclosure mitigation and housing counselors*

**SEE ALSO: FINANCIAL RESOURCES**

## Transportation

Carewell Services  
(269) 966-2450

Community Action  
(269) 565-4144  
(800) 994-9876

**SEE ALSO: TRANSPORTATION**

Recovery-Oriented Systems of Care  
(269) 966-7580

### Screening & Referral

Southwest Michigan Behavioral Health\*\*  
www.swmbh.org  
(800) 781-0353

### Court Services

Calhoun County Drug Court: (269) 969-6796  
Calhoun County Sobriety Court:  
(269) 969-6653  
Veteran's Treatment Court: (269) 969-6657

### Interpretation Services

VOCES» (269) 841-4111

### Prevention/Education

Calhoun County Juvenile Home  
(269) 781-7221  
*Strengthening Families - Residents Only*

Substance Abuse Council: (269) 966-7580  
*Educational Presentations  
Prime for Life  
School-Based Interventions  
Alcohol Retail Compliance  
Substance Abuse Task Forces and  
Committees  
Screening Referral to Treatment*

Substance Abuse Prevention Services  
Albion: (517) 629-2113  
*School & Community-Based  
Interventions*

### Outpatient/Intensive Outpatient (Private Providers)

For a complete list of covered  
providers, contact your  
insurance company

## SUBSTANCE ABUSE SERVICES IN-COUNTY

### Smoking Cessation

Bronson Battle Creek  
(800) 451-6310

Calhoun County Public Health Dept.  
(269) 969-6363

Michigan Tobacco Quit Line  
(800) QUIT-NOW (784-8669)

Nicotine Anonymous:  
(877) 879-6422

Oaklawn Hospital:  
(269) 789-7937

Substance Abuse Council:  
(269) 966-7580  
*Tobacco Retail Compliance*

Substance Abuse Prevention Services  
(517) 629-2113

Private Provider

**Alternative Therapies**  
A Amy Hypnotherapy (269) 963-2333  
Health and Energy Acupuncture  
(269) 962-2836

### Suboxone Treatment

Historic Northside Family Practice#  
Seth Egelston D.O.  
Stephen Robinson M.D.  
(269) 969-6040

Psychological Consultants#  
(269) 968-2811  
*Outpatient Counseling*

Summit Pointe\*\*+  
(269) 966-1460

For an updated list of doctors who provide  
suboxone treatment, go to  
www.suboxone.com

### Treatment/Recovery

Battle Creek Alano Club (o/c):  
(269) 581-0127  
SMART Recovery (o)  
*Room 2 - Recovery Activities*

Gracious Homes: (269) 966-2947  
*Transitional Housing for Women*

SHARE Center: (269) 883-6979  
*Transitional Housing for Men*

Health Professionals Recovery Program  
(800) 453-3784 or www.hprp.org

Sequel-Youth Residential: (517) 629-5591

The Haven of Rest Ministries  
Women's Life Recovery Program  
(269) 441-1701  
Men's Life Recovery Program - Residential  
(269) 965-1148

Outpatient & Intensive Outpatient

Family & Children Services\*\*:  
(269) 965-3247

KPEP\*: (269) 963-2085

Summit Pointe\*\*: (269) 966-1640

The Haven of Rest Ministries:  
(269) 965-1148

### Veterans Services

Substance Abuse Outpatient Services  
(269) 966-5600 x31127

Substance Abuse Residential Rehabilitation  
(269) 966-5600 x30086  
or  
(888) 214-1247 x35356

Veteran's Treatment Court  
(269) 969-6657

### 12 Step Programs

Alcoholics Anonymous  
24 Hour Hotline: (269) 964-7577  
<https://sites.google.com/site/westmidistrict5/>

**Al-Anon and/or AA**  
Battle Creek Alano Club: (269) 660-3288  
Riverside Alano Club: (269) 964-7577  
Alateen: (269) 343-4328

A Vision for You Big Book Study (c)  
Kevin (269) 962-7107

Pills Anonymous: Mike (269) 420-3089

Battle Creek Haven of Rest (o)  
(269) 274-0138

Battle Creek SHARE Center (o)  
(269) 274-7835

Battle Creek Women's Group (c)  
(269) 966-2947

First Congregational Church AA (c)  
(269) 419-9164

Homer Group (o/c): (517) 812-7313

Marshall AA (o/c): (269) 781-2220

Tekonsha Change Your Start (o)  
(269) 275-5931

### Narcotics Anonymous

24 Hour Help Line: (800) 230-4085  
[www.michigan-na.org/battle\\_creek/](http://www.michigan-na.org/battle_creek/)

Rainbow Recovery (o) - Surrender to Win (o)  
I Can't, We Can! (o) - Genesis (o)  
Battle Creek Alano Club: (269) 589-0127

Living Miracles (o)  
Maple United Methodist Church  
(269) 964-1252

Basic Test (o)  
Chapel Hill United Methodist Church  
(269) 963-0231

o = office phone; c = cell phone.

+ Must be a customer of Summit Pointe.

# Does not accept Medicaid.

\*\* Accepts Medicaid and/or uninsured.

# SUBSTANCE ABUSE SERVICES OUT-OF-COUNTY

## Detox

## Residential

### Medicaid /Uninsured/ Underinsured

### Private Insurance

#### Screening & Referral

Southwest Michigan  
Behavioral Health  
www.swmbh.org  
(800) 781-0353

Jim Gilmore, Jr. Community  
Healing Center  
(269) 382-9820

Sacred Heart Rehabilitation Center  
(888) 802-7472

Turning Point  
(616) 742-0351

Allegiance Addiction  
Recovery Center  
(517) 782-4001

Brighton Center for Recovery  
Intake: (877) 976-2371  
General Information: (810) 227-1211

Jim Gilmore, Jr. Community  
Healing Center  
(269) 382-9820

Kairos Health Care  
Women and Adolescents  
(989) 755-1072

Turning Point  
(616) 742-0351

For a complete list of covered  
providers contact your  
insurance company

### Methadone & Suboxone Treatment

Victory Clinical Services (Kalamazoo)  
(269) 344-4458  
*Doctor Visits, Addiction Treatment, Counseling*

#### SHORT TERM

Allegiance Addiction Recovery Center # (m/w)  
(517) 782-4001

Freedom House (w): (616) 281-0061

Holden House\*\*\* # (m): (517) 887-0226

Jellema House (m): (616) 281-0061

Jim Gilmore, Jr. Community Healing Center (m/w)  
(269) 382-9820

Kairos Health Care (adolescents): (989) 755-1072

MVA Hope House (w): (517) 849-2333

Our Hope Association (w): (616) 451-2039

Pine Rest (m/w/adolescents): (800) 678-5500

Sacred Heart Memphis (m): (888) 802-7472

Sacred Heart Clear View (w): (810) 392-2167

Turning Point (m/w): (616) 742-0351

#### LONG TERM

Sacred Heart Clear View\*\* (w): (810) 392-2167x1400

Forest View Hospital (m/w/adolescents):  
(800) 949-8439

Glass House (w): (517) 482-2028

Holden House\*\*\* # (m): (517) 887-0226

House of Commons (m): (517) 244-0393

Jellema House (m): (616) 281-5180

Our Hope (w): (616) 451-2039

Pine Rest (m/w/adolescents): (800) 678-5500

For a complete list of covered  
providers contact your  
insurance company

Residential Service Provider: genders accepted at facility:M=Men; W=Women, M/W= Men & Women.

\*\* Allows women to bring their children up to age 10; does not accept private insurance.

\*\*\* Does not accept private insurance.

# Does not accept Medicaid.



# TEEN PREGNANCY RESOURCES

Call 211 OR (269) 565-4159

## Pregnancy Testing

Alternatives of Battle Creek  
(269) 288-2890

Calhoun County Public Health Department  
Battle Creek: (269) 969-6363  
Albion: (269) 629-9434

CityLinC  
(269) 969-9181  
(Free)

Grace Health  
(269) 965-8866

Marshall Pregnancy Center  
(269) 274-2925

## STI Testing

Calhoun County Public Health Department  
Battle Creek: (269) 969-6363  
Albion: (269) 629-9434

Grace Health  
(269) 965-8866

Planned Parenthood of Michigan  
Kalamazoo: (269) 372-1200

Private Provider

## Pregnancy Prevention

**Prevention Education**  
Alternatives of Battle Creek  
(269) 288-2890

Calhoun County Public Health Department  
*Teen Outreach Program*  
(269) 969-6482

Planned Parenthood of Michigan  
*Project T.R.U.S.T*  
(269) 372-1200

Substance Abuse Prevention Services  
*Kids at Hope*  
(517) 629-2113

**Contraceptives**  
Calhoun County Public Health Department  
*Condoms Only*  
Battle Creek: (269) 969-6363  
Albion: (269) 629-9434

Grace Health  
(269) 965-8866

Planned Parenthood of Michigan  
Kalamazoo: (269) 327-1200

Private Provider

## Resources For Pregnant Teens

**Childbirth Education**  
Bronson Battle Creek <sup>z</sup> (269) 245-8586

Oaklawn Hospital Birth Center<sup>+</sup> (269) 789-3929

Southern Michigan Doulas and Childbirth Education Boutique (269) 274-2925

**Nutrition**  
Women Infants & Children (WIC)  
Battle Creek: (269) 969-6860  
Marshall: 781-0909  
Albion: (517) 629-9394

**Breastfeeding Education**  
Bronson Battle Creek (269) 245-8586

Grace Health  
Pediatrics: (269) 441-3454  
OB/GYN: (269) 441-3443  
24 Hour and Weekend Line (269) 965-8866

Oaklawn Hospital Birth Center<sup>+</sup> (269) 789-3929

Southern Michigan Doulas and Childbirth Education Boutique (269) 274-2925

Women Infants & Children (WIC)  
Battle Creek: (269) 969-6860  
Marshall: (269) 781-0909  
Albion: (517) 629-9394

**Teen Parent Programs**  
Michigan Adolescent Pregnancy & Parenting Program  
(269) 969-6469

Nurse Family Partnership Program (269) 969-6392

**Medicaid for Pregnant Women**  
Department of Health & Human Services  
(269) 966-1284

**Obstetrics**  
Grace Health OB/GYN (269) 441-3443

Private Provider

**All Options Counseling**  
Planned Parenthood of Michigan  
Kalamazoo: (269) 327-1200

Private Provider

## Resources For Teen Parents

**Immunizations**  
Calhoun County Public Health Department  
Battle Creek: (269) 969-6363  
Albion: (269) 629-9434

Grace Health (269) 965-8866

Private Provider

**Child Care**  
Child Care Resources (877) 614-7328

**Insurance/Financial Resources**  
Department of Health & Human Services  
(296) 966-1284

**Resources for Infant Needs**  
Albion First United Methodist Church - Baby Pantry  
(517) 629-9425

Albion Interfaith Ministries  
(517) 629-5260

Alternatives of Battle Creek  
(269) 288-2890

Charitable Union (269) 964-7234

Neighborhood Food Pantry Ministries  
(269) 969-2451

Infant Safe Sleep Information  
(269) 969-6482

**Nutrition**  
Albion First United Methodist Church\*  
*Diapers, Formula, Baby Food*  
(517) 629-9425

Women Infants & Children (WIC)  
Battle Creek: (269) 969-6860  
Marshall: (269) 781-0909  
Albion: (517) 629-9394

**Early Childhood Education**  
Calhoun Intermediate School District  
(269) 660-1606

Community Action Head Start  
(877) 543-7577

<sup>z</sup>\$50 or Medicaid.

<sup>+</sup> \$40 or Medicaid.

\*Requires 211 referral.

# TRANSPORTATION

## General Public

### Vans

**Albion-Marshall Connector<sup>z</sup>**  
(269) 781-3975 or  
(517) 654-3000

**Community Action**  
(269) 565-4144  
(800) 994-9876

**Battle Creek Tele-Transit\* +**  
(269) 966-3474  
*\$7.00 one way*

**Marshall Dial-A-Ride\***  
(269) 781-3975  
*In-Town \$3.00*  
*Out-of-Town \$4.00*

### Cabs\*

**City Cab**  
**Union Cab**  
**Yellow Cab**  
(269) 660-8294  
*\$2.25 plus \$2 @ mile*

### Buses

**Greyhound\***  
(269) 964-1768

**BC Transit\***  
(269) 966-3474  
[www.battlecreekmi.gov](http://www.battlecreekmi.gov)

## Disabled Individuals

**Battle Creek Tele-Transit\* +**  
(269) 966-3474  
*\$2.00 one way*

**Community Action**  
(269) 565-4144  
(800) 994-9876

**Marshall Dial-A-Ride\***  
(269) 781-3975  
*In-Town \$1.50*  
*Out-of-Town \$2.00*

See also Transportation for  
General Public

## Older Adults

**Community Action**  
(269) 565-4144  
(800) 994-9876

**Battle Creek Tele-Transit\* +**  
(269) 966-3474  
*\$2.00 One-Way*

**Marshall Dial-A-Ride\***  
(269) 781-3975  
*In-Town \$1.50*  
*Out-of-Town \$2.00*

See also Transportation for  
General Public

\* Allow children riders with adult.

+ For Battle Creek area residents over age 60 only.

<sup>z</sup> Requires 24-hour advance notice. Monday-Friday 6:30 a.m. - 5:00 p.m. \$2 ages 13 and over. \$1 Disabled Seniors (60+) and children under age 12.



# VETERANS BENEFITS

**VETERANS AFFAIRS MEDICAL CENTER OF  
BATTLE CREEK**  
(269) 966-5600

**UNITED STATES VETERANS  
BENEFITS ADMINISTRATION**  
(800) 827-1000

**CALHOUN COUNTY  
VETERANS AFFAIRS**  
(269) 969-6735

## Burial Services

**Calhoun County Veterans  
Affairs**  
(269) 969-6735

**Burial (800) 827-1000**  
**Death Pension**  
(800) 827-1000

## Education and Training

**Compensated Work Therapy/  
Incentive Work Therapy**  
(269) 966-5600 x31818

**Children of Veterans  
Tuition Grant**  
(888) 447-2687

**Michigan Veterans Resource  
Service Center**  
(800) 642-4838

**Montgomery GI Bill**  
(888) 442-4551

**Operation Enduring Freedom,  
Operation New Dawn  
Transition Team**  
(269) 966-5600 x35307

**Post 9-1-1 GI Bill**  
(888) 442-4551

## Healthcare

**CHAMPVA (VA Civilian Health & Medical Program)**  
(800) 733-8387

**Residential Rehab Treatment Program**  
(269) 966-5600 x30086

**Health Care for Homeless Veterans**  
(269) 966-5600

**Helpline - Agent Orange & Gulf War**  
(800) 749-8387

**Mental Health/Psychiatry (269) 966-5600 x33680**

**National Veteran's Administration: (877) 222-8387**

**Operation Enduring Freedom,  
Operation New Dawn Transition Team**  
(269) 966-5600 x35307

**PTSD/Post-Traumatic Stress Disorder Care**  
(269) 966-5600 x30086

**Senior Health Partners**  
*Creating Confident Caregivers - Educational Class*  
(269) 441-0920

**VA Community Based Outpatient Clinic - Lansing**  
(517) 267-3925

**Wellness & Recovery Center**  
(269) 966-5600 x30054

## Life Insurance

**National Veteran's  
Administration**  
(800) 669-8477  
**Office of SGLI**  
(800) 419-1473

## Compensation and Pension

**Calhoun County Veterans  
Affairs**  
(269) 969-6735  
**Direct Deposit**  
(800) 827-1000

## Substance Abuse

**Substance Abuse Treatment**  
(269) 966-5600 x 30086  
or  
(888) 214-1247 x 35356

## Crisis Line

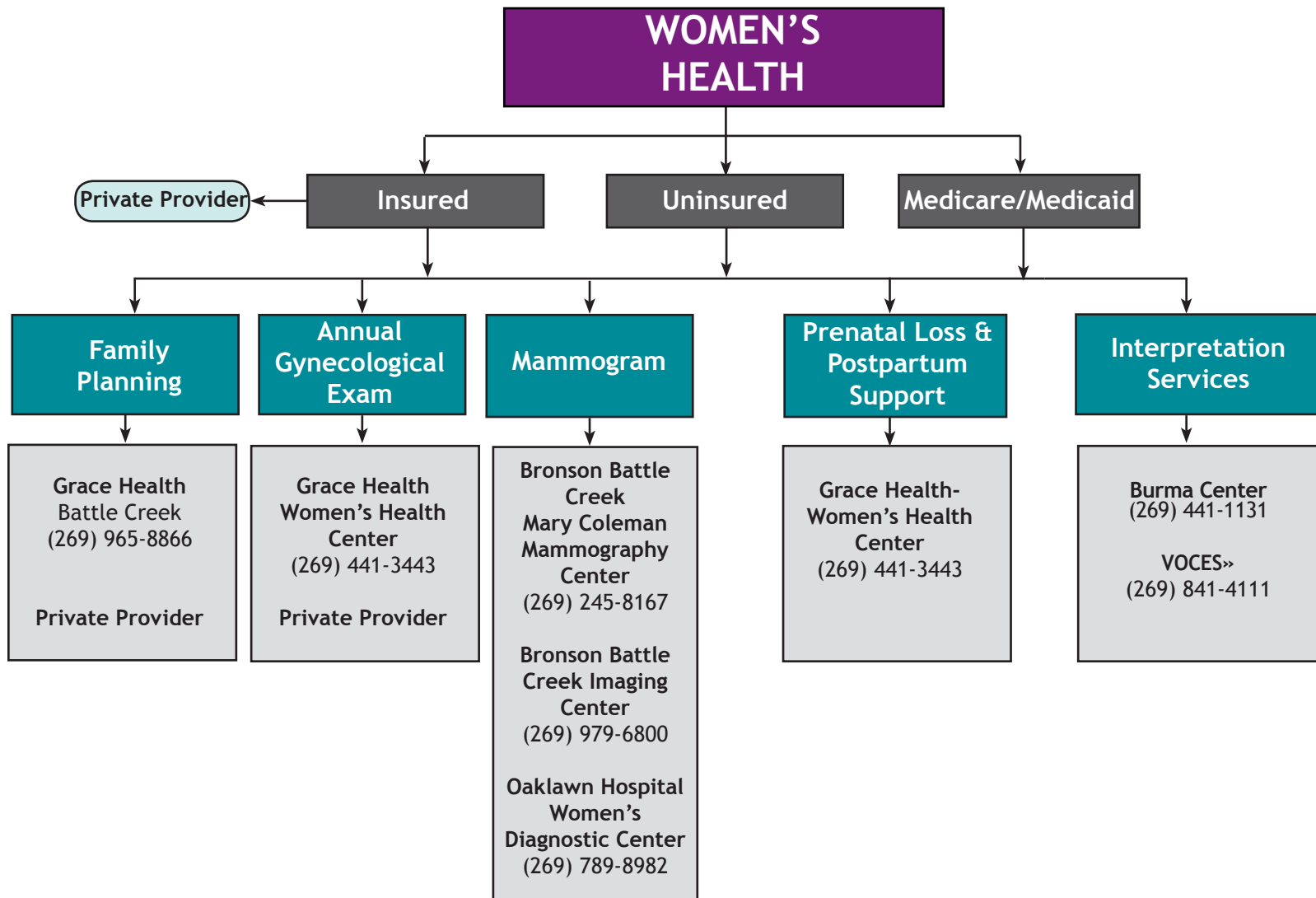
**Veteran's Crisis Line**  
(800) 273-8255

## Referrals To:

Transitional Housing  
Food Pantry  
Life Skills Training  
Employment Training  
Job Opportunities/Referrals  
Education  
Health Care Services  
PTSD Counseling  
Transportation Assistance  
Meals & Clothing  
Support Groups  
Substance Abuse Intervention  
Legal Assistance

## Housing/Emergency Assistance

**Calhoun County Veterans Affairs**  
(269) 969-6735  
**Michigan Veterans Trust Fund**  
(269) 969-6739  
**Southwest Michigan Veterans  
Relief Fund**  
(269) 224-2993  
**Silverstar (Housing)**  
(269) 964-6000  
**Volunteers of America**  
(269) 447-1462



» Provides in-person interpreters in Spanish, Hakha, Falam, and Burmese, as well as over 200 other languages through a telephone interpreting service. Charges fee for organizations but not community members.

# YOUTH SERVICES

## COUNSELING AND FAMILY SUPPORT SERVICES

### Individual and Family Counseling

Christian Counseling Center of  
Battle Creek  
(269) 979-8119

Battle Creek Counseling Associates  
(269) 962-2722  
*Individual Counseling,  
Family Counseling,  
CSC Psychiatric Evaluations,  
Sex Offender Group,  
Testing & Assessment*

Summit Pointe  
(269) 966-1460  
*Individual Therapy,  
Family & Group Therapy,  
Psychiatric Services,  
Testing & Assessment*

CitiLinC  
(269) 969-9181  
*Affordable Faith-Based Counseling*

Family & Children Services  
(269) 965-3247  
*Individual Therapy,  
Family Therapy,  
Play Therapy for Children*

Grace Health  
(269) 441-1960  
*Behavioral Health Counseling*

Oaklawn Hospital Psychological  
Services  
(269) 781-9119

Pine Rest Christian Mental Health  
Services: (800) 678-5500  
*Inpatient, Outpatient,  
Partial Residential,  
Residential,  
Substance Abuse (Fee for Assessment)*

Psychological Consultants  
(269) 968-2811  
Toll Free: (800) 261-8850  
*Outpatient,  
Attention Deficit Clinic,  
Evaluation*

S.A.F.E. Place  
(Domestic Violence)  
24-Hour Confidential Crisis Line  
(269) 965-SAFE (7233)  
or (888) 664-9832

Sexual Assault Services  
(269) 245-3925  
24-Hour Crisis Line  
(888) 383-2192

Summit Pointe  
(269) 966-1460  
*Individual Therapy,  
Family & Group Therapy  
Psychiatric Services,  
Testing & Assessment*

### Crisis Services

Bronson Battle Creek  
(269) 245-8000  
Emergency Room

Oaklawn Hospital (Marshall)  
(269) 781-3916  
Emergency Room

Summit Pointe  
24-Hour Crisis Hotline  
(800) 632-5449

Private Provider

### Abuse/Neglect

Child Abuse & Neglect Hotline  
(800) 4-A-Child (422-4453)

Michigan Abuse & Neglect Line  
(24 Hours)  
(855) 444-3911

S.A.F.E. Place  
(Domestic Violence)  
24-Hour Confidential Crisis Line  
(269) 965-SAFE (7233)  
or (888) 664-9832

### Intensive Family Services

Family & Children Services  
(269) 965-3247  
*Case Management,  
Home-Based Family Treatment,  
Infant Mental Health  
Home-Based Treatment,  
Facility-Based Respite Care Services,  
Community Living Support Group  
Services*

Samaritas  
(269) 532-0827  
*Home-Based Services,  
Family Counseling,  
Families First (through DHS)*

Starr Commonwealth  
Albion (517) 629-5591  
Battle Creek (269) 968-9287  
Toll Free (800) 837-5591  
*Home-Based Services,  
Mental Health Counseling,  
Family Counseling*

Summit Pointe (269) 966-1460  
*Multi-Systemic Therapy;  
Individual,  
Family and Group Counseling*

Sexual Assault Services:  
(269) 245-3925  
24 Hour Crisis Line:  
(888) 383-2192

### Other Family Resources

Community Action  
(269) 965-7766  
*Fatherhood/Male Involvement*

Community Fatherhood  
(269) 282-1340

Summit Pointe Autism Center  
(269) 441-2700  
*For those with developmental  
disabilities including  
Autism Spectrum Disorder  
(18 mos. - 21 years with  
Medicaid only)*

Family Enrichment Center  
(269) 660-0448

Positive Impact  
(269) 223-0604  
*Youth 10-17,  
Self-Esteem, Mentoring,  
Life Coaching, Bullying,  
Parenting Groups*

Substance Abuse Council  
(269) 966-7580  
*Strengthening Families*

Substance Abuse Prevention Services  
(517) 629-2113

The Arc  
(269) 966-2575,  
(800) 400-2941  
*Advocacy,  
Support Services, Referral,  
Alternatives to Guardianship*

# YOUTH SERVICES

## EXTRACURRICULAR COMMUNITY OPPORTUNITIES

### Recreation

The Arc  
*For Developmental Disabilities*  
(269) 966-2575

Battle Creek Family YMCA  
(269) 963-9622

Community Inclusive  
Recreation  
(269) 968-8249

New Level Sports  
(269) 964-4172

Recreation Departments  
Battle Creek (269) 966-3431  
Albion (517) 629-5535 x.6  
Marshall (269) 781-5166

Wattles Park Men's Club  
(269) 979-4336  
*Year-round Athletic Programs*

### Libraries

Albion Public Library  
(517) 629-3993

Athens Community Library  
(269) 729-4479

Homer Public Library  
(517) 568-3450

Marshall District Library  
(269) 781-7821

Tekonsha Township Library  
(517) 767-4769

Willard Library (Battle Creek)  
(269) 968-8166

### After School Programs

21st Century Community  
Learning Center  
*Battle Creek Public  
Schools Only*  
(269) 965-3883

Community Action  
(269) 965-7766  
*After-school Study  
and Recreation*

Harper Creek Community Schools  
Before/After Care Program  
(269) 441-3280  
*Affordable Childcare*

Homer GAP Program  
(517) 568-4463

Tekonsha Blast Program  
(517) 767-4123

### Employment

The Arc  
*For Developmental Disabilities*  
(269) 966-2575

Goodwill Connects  
*Operated by Goodwill Industries*  
(269) 788-6500

Job Corps  
(800) 733-5627  
*Career Training (Ages 16-24)*

Michigan Rehabilitation  
Services  
(269) 968-3311

### Volunteer Service

Albion Volunteer Service  
Organization  
(517) 629-5574

American Red Cross  
*Ask for Volunteer Coordinator*  
(269) 353-6180

HandsOn Battle Creek  
(269) 966-4189  
*Youth Public Engagement  
Opportunities*

Marshall Area Community  
Services  
(269) 781-2954

Urban League of Battle Creek  
(269) 962-5553  
*Future Force  
(Volunteer Job Skills Training)*

### Miscellaneous Activities

Battle Creek Community  
Foundation  
(269) 962-2181  
*Youth Alliance Committee*

Boy Scouts of America  
(269) 962-8513

Center for Entrepreneurship  
*Entrepreneur Education (All Ages)*  
*Generation E Institute,*  
*Youth Entrepreneurship (BizWiz)*  
*Grades 3-12 (After School)*  
(269) 966-4095

### CityLinC

*Second Wind Mentors*  
(269) 969-9181x 4

Community Unlimited  
(517) 741-4656  
*Union City Schools*

Girl Scouts Heart of Michigan  
(269) 532-0456

Substance Abuse Prevention  
Services  
(517) 629-2113  
*Positive Youth Development,  
Leadership Development*

MSU Extension 4-H  
(269) 781-0784  
*\$10 per year to be a member  
Ages 5-19*

Planned Parenthood of Mid &  
South Central Michigan  
Toll Free (800) 559-9093  
*Peer Education*

The Arc  
(269) 966-2575  
*Life Skills for  
Developmentally Disabled*

Urban League of Battle Creek  
(269) 962-5553  
*Sojourner Truth Girls Academy,  
Future Force,  
Youth Leadership Camp,  
Kids Village*

# YOUTH SERVICES

## ATTITUDES & SKILLS

### Gang Intervention

Urban League of Battle Creek (269) 962-5553  
*Youth Leadership Camp*

### Mentoring

Big Brothers Big Sisters (269) 964-7117

CityLinC *Second Wind Mentors* (269) 969-9181

Substance Abuse Prevention Services (517) 629-2113

### Character Education

Kinetic Affect and Speak It Forward, Inc.  
(269) 779-9663

Michigan Youth ChalleNGe Academy (800) 372-0523

Urban League of Battle Creek (269) 962-5553  
*Future Force, Sojourner Truth Girls Academy,*

### Miscellaneous

Family & Children Services (269) 965-3247  
*Pregnancy Counseling, Teen Parent Program,  
Parent Infant Program  
(parent or child with mental illness),  
Community Living Support & Training*

Substance Abuse Prevention Services (517) 629-2113  
*Life Skills Development,  
Leadership Development,  
Violence Prevention*

Summit Pointe (269) 966-1460  
*Youth Services Team*

## SUBSTANCE ABUSE

### Support Groups

Alcoholics Anonymous, Alanon  
(269) 964-7577

Bronson Battle Creek  
*Smoking Cessation* (800) 451-6310

National Drug & Alcohol Treatment  
(800) 662-HELP(4357)

### Treatment

Kairos Health Care (989) 755-1072  
*Long Term/Short Term, Residential*

Psychological Consultants  
(269) 968-2811

### Prevention

Substance Abuse Council  
(269) 966-7580

Substance Abuse Prevention Services  
(517) 629-2113

### Screening and Referral

Summit Pointe (269) 966-1460

### Recovery

Battle Creek Alano Club  
Community Recovery Center  
(269) 660-3288

Riverside Alano (269) 964-7577

**SEE ALSO:  
SUBSTANCE ABUSE**

# YOUTH SERVICES

## LEGAL SERVICES

Police Emergency 911

Albion City Police Dept (517) 629-3933

Battle Creek Police Department  
Community Services (269) 966-3302

Calhoun County Sheriff (269) 969-6450

Legal Services of South Central Michigan  
(269) 965-3951; Toll Free: (800) 688-3951

Marshall City Police (269) 781-2596

**Calhoun County Justice Complex**  
Circuit Court Clerk, Family Division  
(269) 969-6518

Circuit Court, Family Division  
(269) 969-6732

Family Court  
(269) 969-6775  
*Juvenile Probation Services*

Friend of the Court  
(269) 969-6415  
*24-Hour Computerized Case Info Access Line)*  
*Information Services Unit (269) 969-6500*

Juvenile Home (269) 781-0920 or 7221

Office of the Prosecuting Attorney  
(269) 969-6980

## SCHOOL & EDUCATION

Calhoun Intermediate  
School District  
(269) 781-5141

**Alternative Education**  
Calhoun Area Career Center  
(269) 968-2271

Calhoun Community  
High School  
(269) 565-4782

Marshall Alternative  
(517) 629-9421

Michigan Youth  
ChalleNGe Academy  
(800) 372-0523

Battle Creek Public  
School District  
(269) 965-9500

**Scholarship Programs**  
Battle Creek Community  
Foundation  
(269) 962-2181  
*Legacy Scholars,  
GEAR Up,  
Other scholarships*

Battle Creek Public Schools  
(269) 965-9470  
*Grades 4-11*

Lakeview Schools  
Educational Foundation  
(269) 565-3720

Urban League of Battle Creek  
(269) 962-5553  
*Future Force,  
Sojourner Truth Girls Academy*

Winship Scholarship  
Foundation  
(269) 966-6340

**School Liaison Services**  
The Arc (269) 966-2575  
*Educational Advocacy  
for  
Special Education*