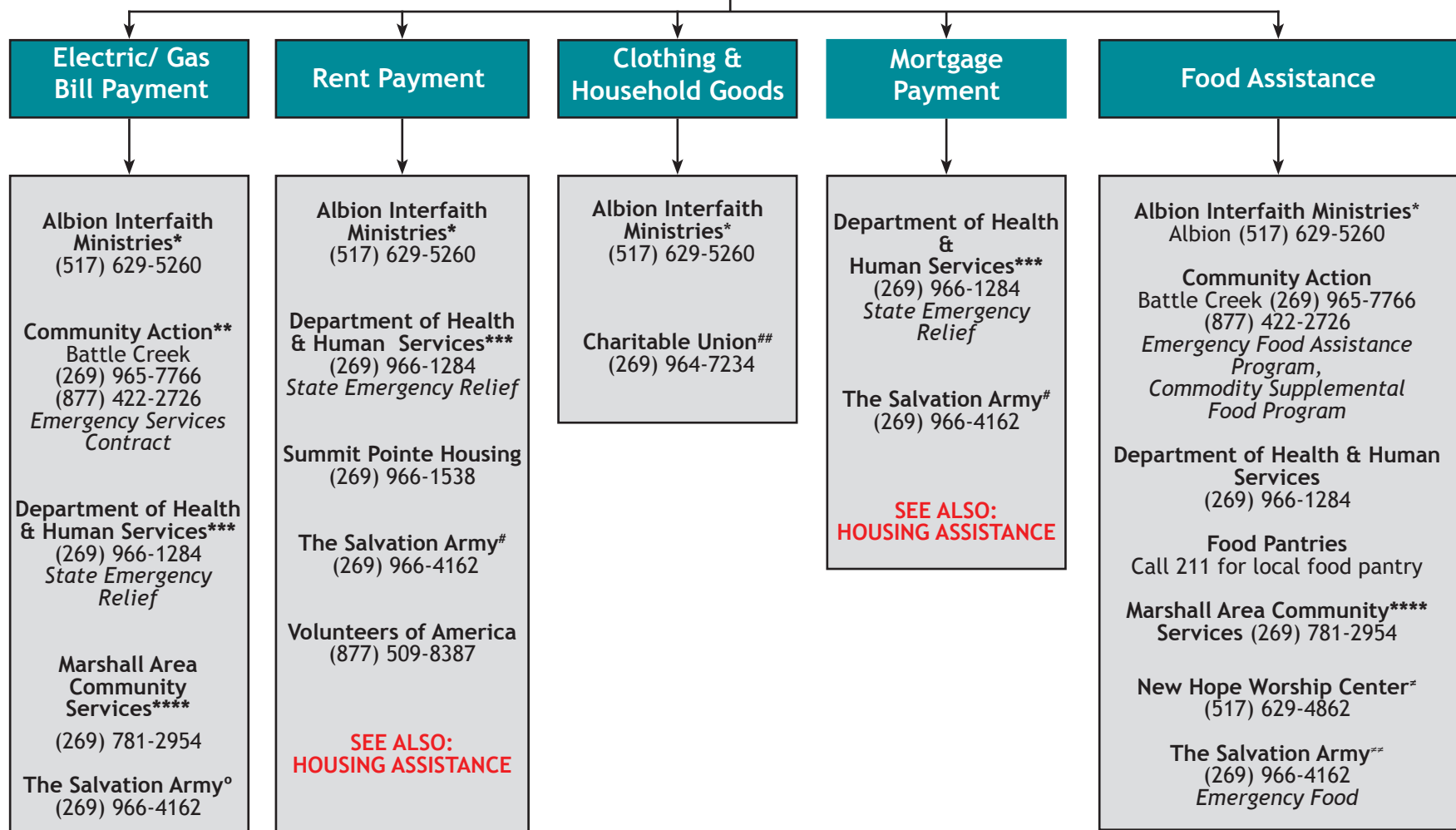


EMERGENCY ASSISTANCE

211 or (269) 565-4159



* AIM serves residents of Albion and Homer areas only after all other agencies have denied services.

** One time emergency. Must be referred by DHHS first. Availability of funds dependent upon receipt of grants to cover costs.

*** State Emergency relief for bill payment has an annual maximum. Must have shut off notice or eviction notice to access services.

**** Only for Marshall residents. Call for current eligibility requirements.

° Salvation Army must have shut off notice and DHHS decision notice if available. Must go through 211. Limited by annual cap.

Must be referred through 211 and present decision notice from DHHS.

Must demonstrate need, usually by presenting Medicaid card, Bridge card or acquiring referral through 211. Also helps individuals who have a barrier for employment (e.g., medical scrubs, steel-toed boots, etc.); referral comes from employer.

≠ Food distribution once per month on 4th Saturday from 9:00 a.m. - 11:00 a.m.

≠≠ Salvation Army Emergency Food requires State ID for everyone over 18 and Social Security cards for entire household. M-F, Noon-3:30 P.M.