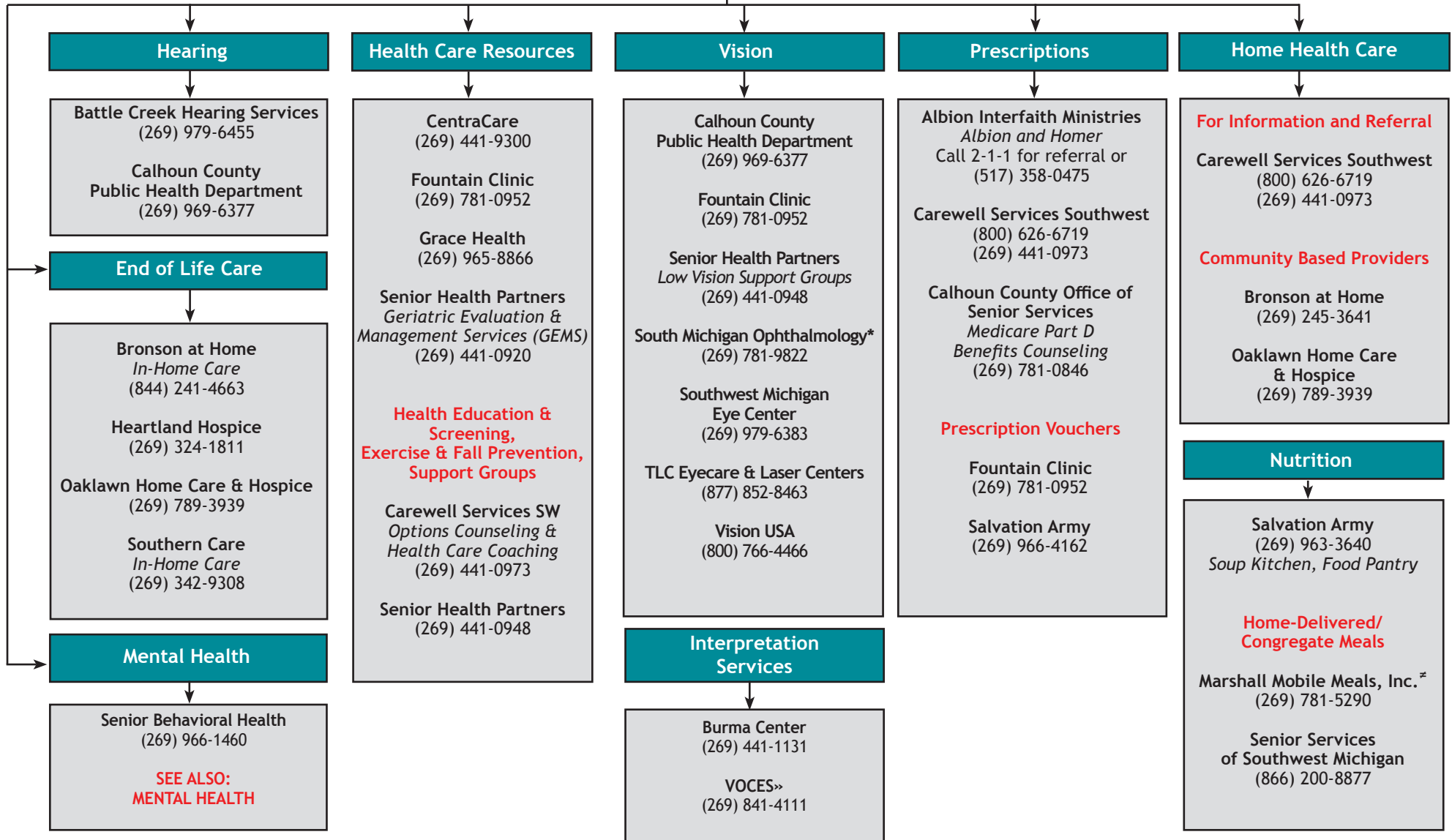


SENIOR HEALTH SERVICES

ADDITIONAL INFORMATION AND ASSISTANCE CAN BE FOUND BY CONTACTING CAREWELL SERVICES SOUTHWEST AT (800) 626-6719 or (269) 441-0973



> Congregate Meals are offered at various sites in Calhoun County including Albion, Battle Creek, Homer and Marshall.

> Food Pantries are available with a referral from 211 or the Department of Human Services.

» Provides in-person interpreters in Spanish, Hakha, Falam, and Burmese, as well as over 200 other languages through a telephone interpreting service. Charges fee for organizations but not community members.

≠ Area served lies between 15 Mile Road and 19 Mile Road, B Drive South and H Drive North.

* No longer accepts Medicaid as of 6/1/2017